



Performance Monitors use WMI to gather statistics on a network's devices to create real-time reports that trend the utilization and availability of device resources.

Microsoft's Windows Management Instrumentation (WMI) provides a standardized means for managing various-sized computer networks.

In the case of network monitoring, management is defined as the collection of data about the state of managed objects. A managed object can be a hardware entity (i.e. a memory array, a port, or a disk drive) or a software entity (i.e. a service, a user account, or a page file.)

Network administrators can use WMI to query and set information on desktop systems, applications, and other enterprise components.

The network monitoring tool WhatsUp Gold, uses WMI to gather important network information in its performance monitor feature.

WhatsUp Gold Performance Monitors

Performance monitors in WhatsUp Gold gather important information about the devices running on your network, then use that data to create reports trending the utilization and availability of different aspects of those devices.

Performance monitors are configured in the Performance Monitor Library, and added to individual devices through **Device Properties > Performance Monitors**. You can create global WMI and SNMP monitors in the library, or create device-specific monitors in Device Properties.

There are two types of Performance Monitors in WhatsUp Gold, those installed with the application and custom monitors.

WhatsUp Gold is installed with five performance monitors that monitor specific types of data on your network devices:

- CPU Utilization

- Disk Utilization
- Interface/Bandwidth Utilization
- Memory Utilization
- Ping Latency and Availability

You can also create custom script monitors for any WMI or SNMP performance counter and.

Performance monitors are configurable for single devices or for a group of devices.

Before configuring a monitor:

- Make sure that SNMP or WMI monitoring is enabled for the device(s).
- Set the credentials for accessing the device(s) via SNMP or WMI.

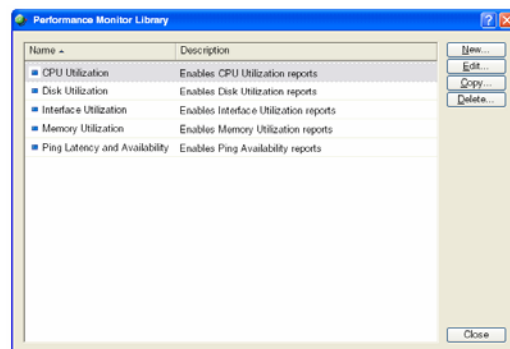
For steps on how to configure performance monitors, please see the WhatsUp Gold online help and User Guide.

Performance Monitor Library

The Performance Monitor Library is a central storehouse of all performance monitors that have been configured for your network. When changes are made to the custom Performance Monitors in this library, those changes affect each instance of that particular monitor across your device groups.

You can create new performance monitors, or edit, copy, and delete existing performance monitors from the Performance Monitor Library.

To access the library, from the WhatsUp Gold Go menu (on the web interface), select **Configure > Performance Monitor Library**.



The Performance Monitor Library

Performance Reporting

Once you have configured a performance monitor, you can generate a performance report to see the results of the performance polling attempts. These reports can be used to troubleshoot your network problems.

More than 40 full reports and 100 workspace reports are installed with WhatsUp Gold. The full reports can be accessed from both the WhatsUp Gold console and the web interface, and are viewed on the Reports Tab in the web interface.

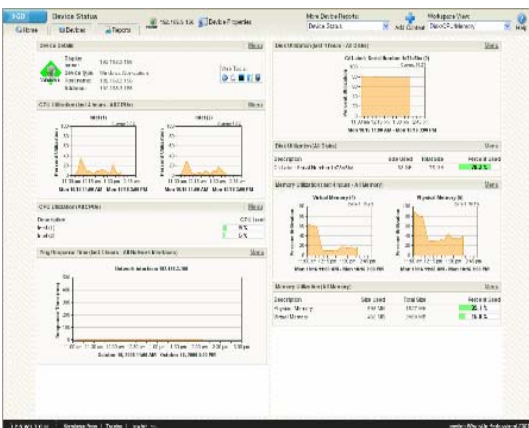
To use the Reports Tab, click on the tab at the bottom of the application window. From there, select the report you want to view.

All reports can be printed and many can also be exported into Microsoft Excel. From the Web interface, reports can be saved as an .html file for later review.

Two reports important to performance monitoring are the Top 10 Report and the Device Status Report.

Device Status Workspace/Report

This report details the current status (a snapshot) of one device within a group. The workspace reports within this full report only contain data if those performance monitors have been enabled for the device on **Device Properties > Performance Monitors**.



Device Status Workspace/Report

Top 10 Workspace/Report

This collection of reports displays the top 10 devices in your network based on the criteria of each report section. You can configure how you want the report to look including the order of the reports, the number of items in each report, and which column the report appears in.

You have the option to view all of the devices associated with a report by clicking on the **All Devices** link at the top of each report window.

Report percentages are displayed in colors that coincide with the WhatsUp Professional CPU Utilization thresholds:

- Red – above 90%
- Yellow – above 80%
- Green – below 80%

You can edit these thresholds by changing the GetProgressBar() function at:
\\ipswitch\WhatsUpProfessional\HTML\1033\N\nConsole\Utility\ReportStandardFunctions.inc

Recurring Reports

The recurring reports feature in WhatsUp Gold allows you to send performance reports to email addresses at regularly scheduled intervals. For instance, a network administrator can configure a recurring report to be sent to their email address every morning so they can check on the status of the network before arriving to work.

Recurring reports are a useful tool that keeps network administrators informed of their network's status when they are away from the office.

More Information

For more information about how to use WhatsUp Gold, refer to the User Guide, and the WhatsUp Gold online help. Both are great resources for configuration and solution information.

